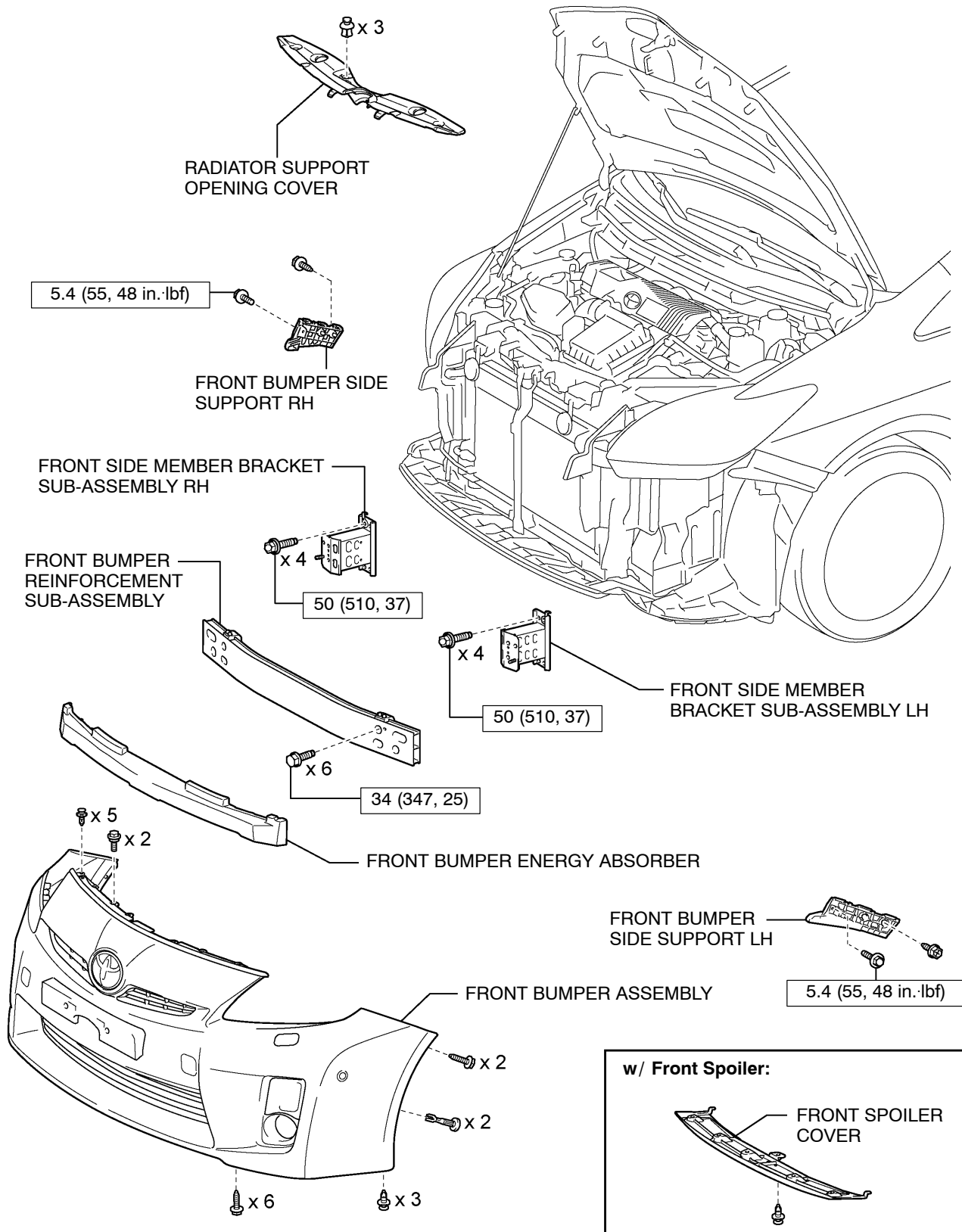


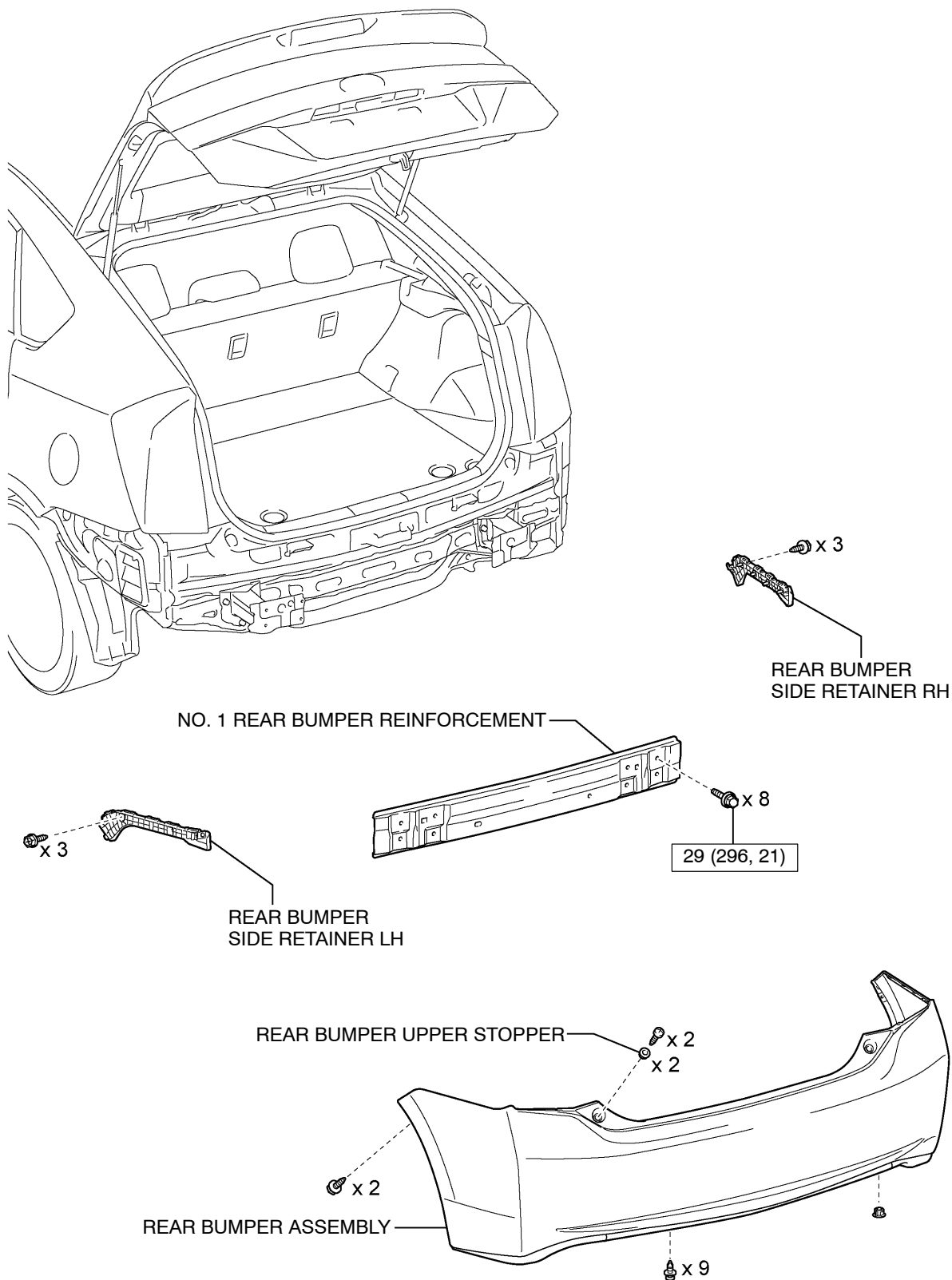
4. COMPONENTS

(a) FRONT BUMPER

**CAUTION:**

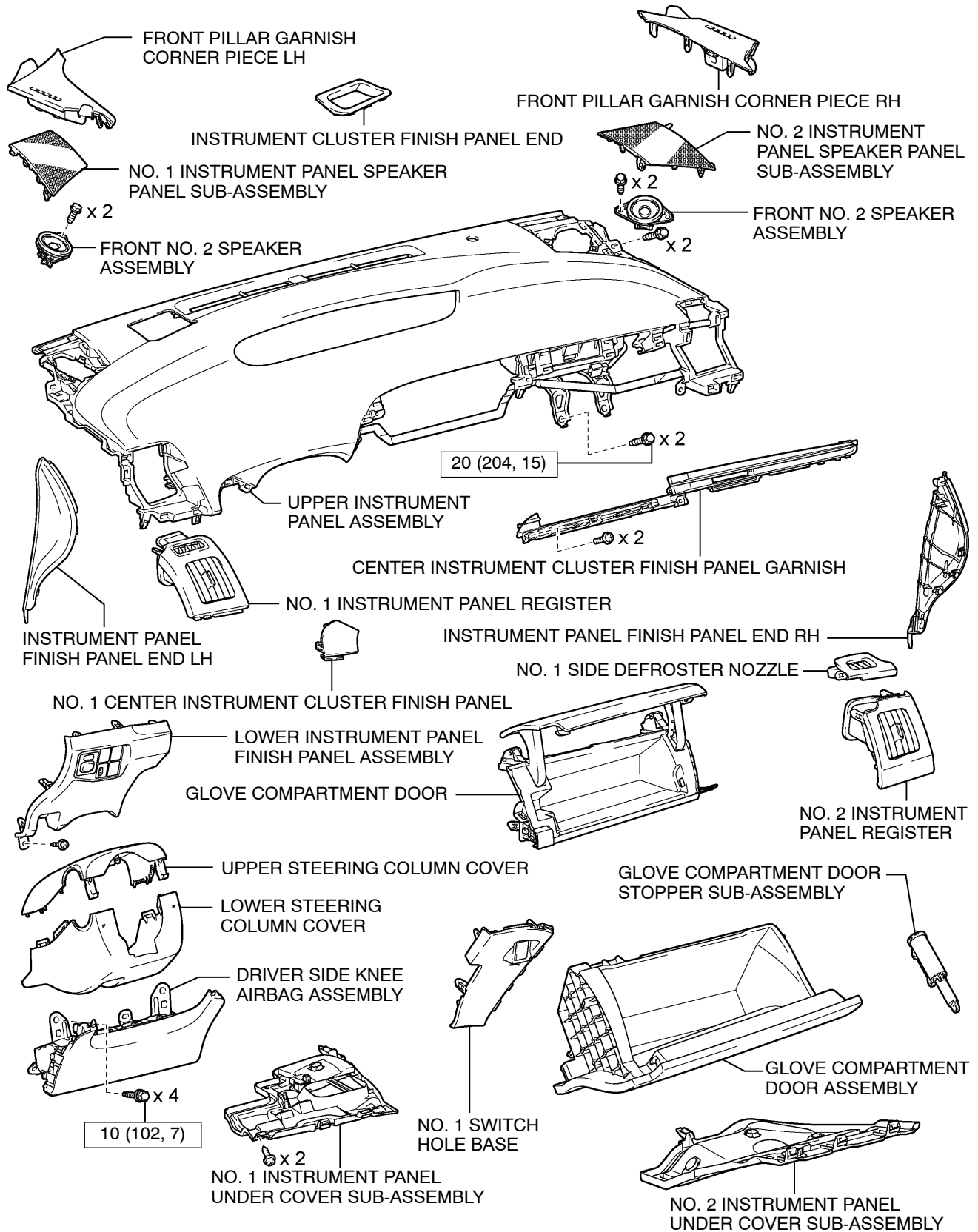
The bolts must be tightened to the torque specification, as they are related to vehicle safety during a collision.

N·m (kgf·cm, ft.·lbf) : Specified torque

(b) REAR BUMPER**CAUTION:**

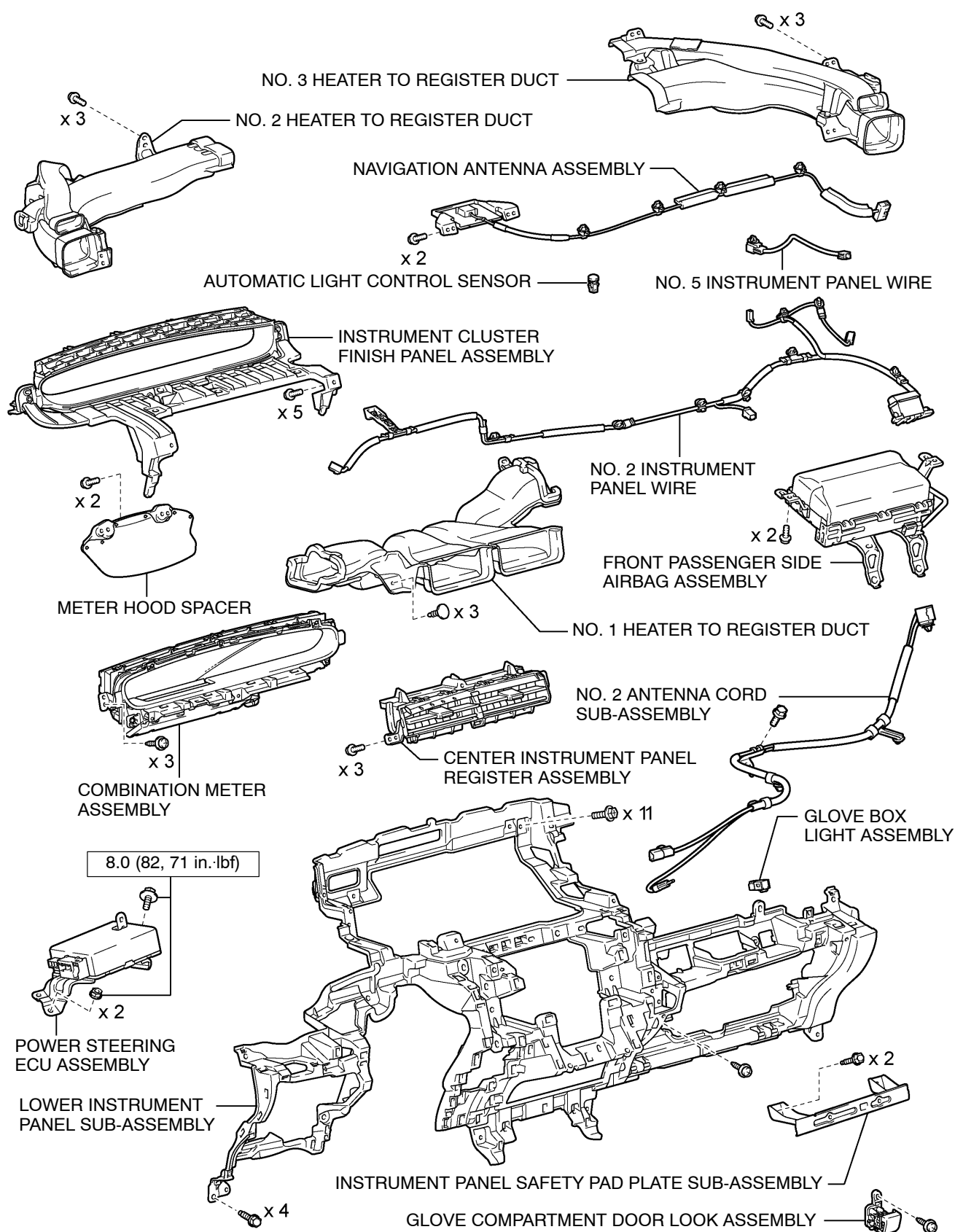
The bolts must be tightened to the torque specification, as they are related to vehicle safety during a collision.

N·m (kgf·cm, ft·lbf) : Specified torque

(c) INSTRUMENT PANEL**CAUTION:**

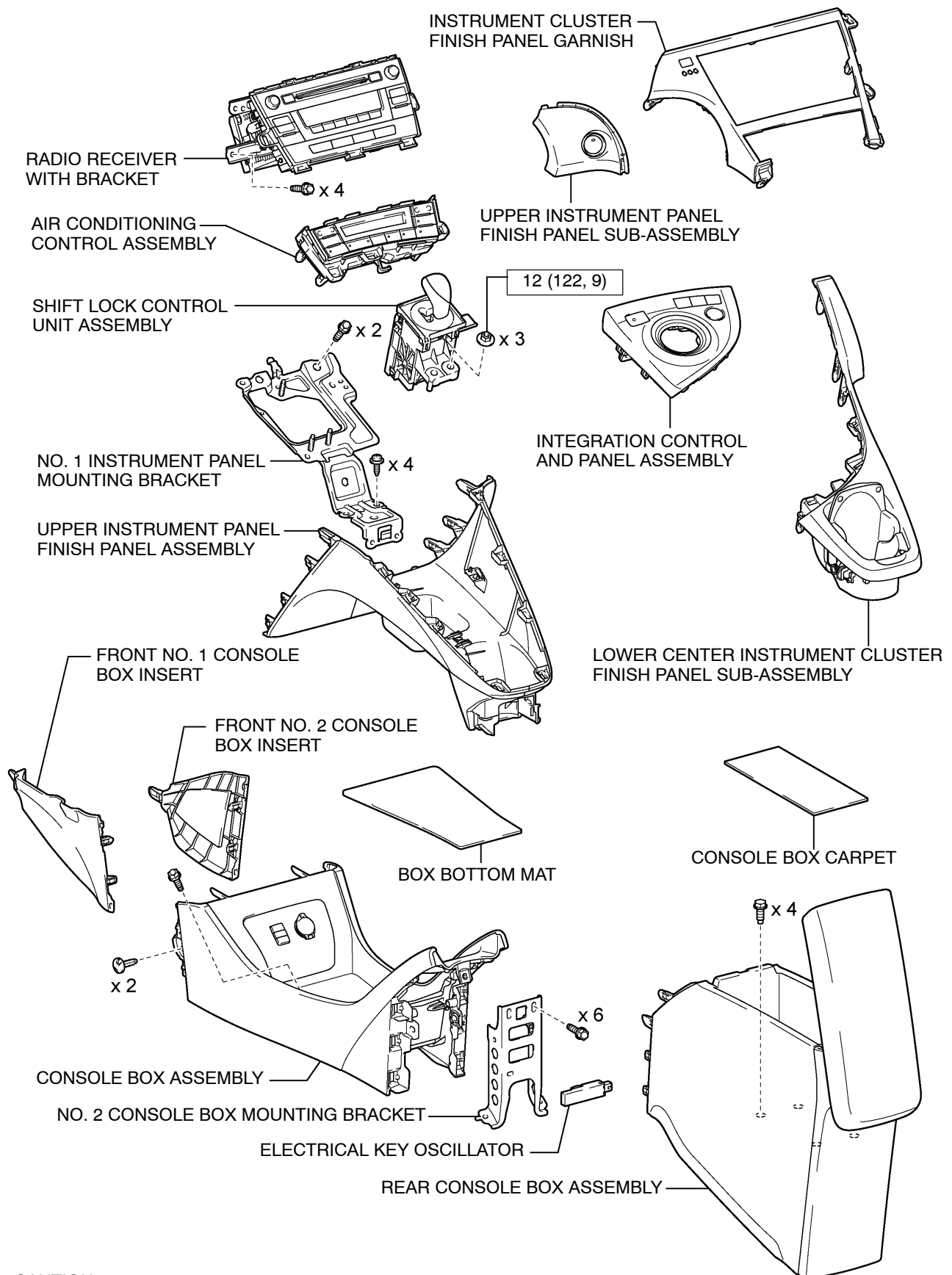
The bolts must be tightened to the torque specification, as they are related to vehicle safety during a collision.

N·m (kgf·cm, ft·lbf) : Specified torque

**CAUTION:**

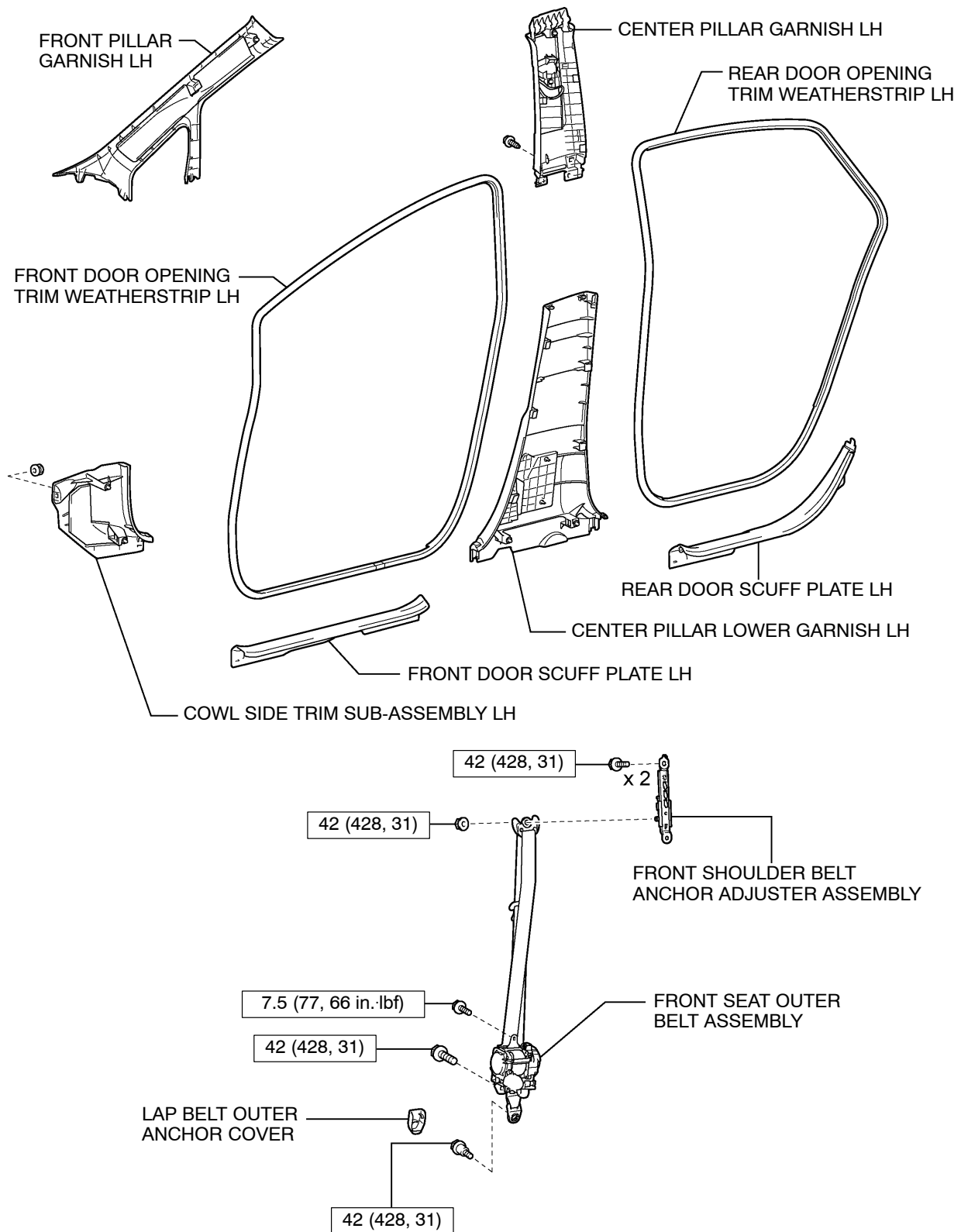
The bolts and nuts must be tightened to the torque specification, as they are related to vehicle safety during a collision.

N·m (kgf·cm, ft. lbf) : Specified torque

**CAUTION:**

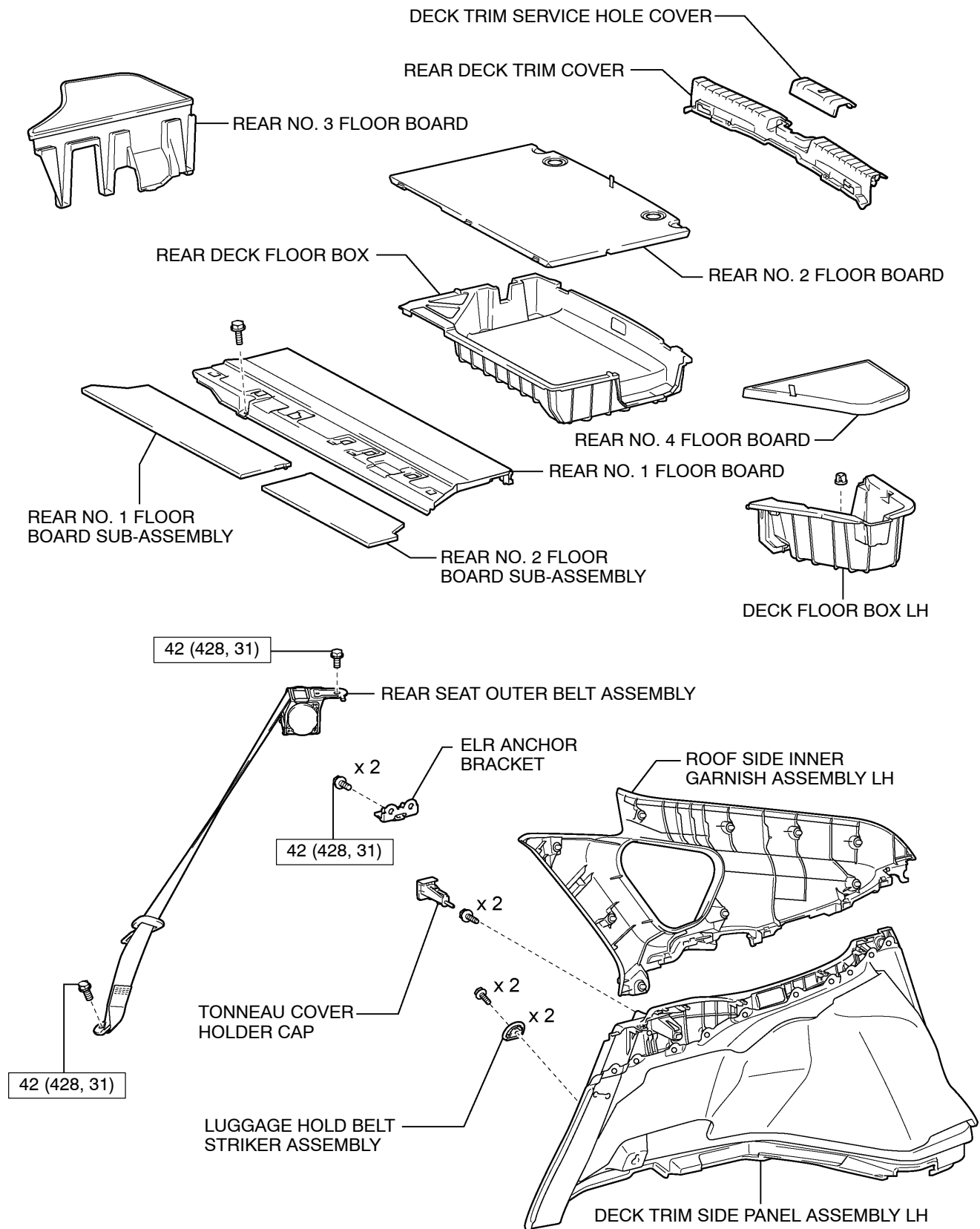
The bolts and nuts must be tightened to the torque specification, as they are related to vehicle safety during a collision.

N·m (kgf·cm, ft·lbf) : Specified torque

(d) INTERIOR TRIM**CAUTION:**

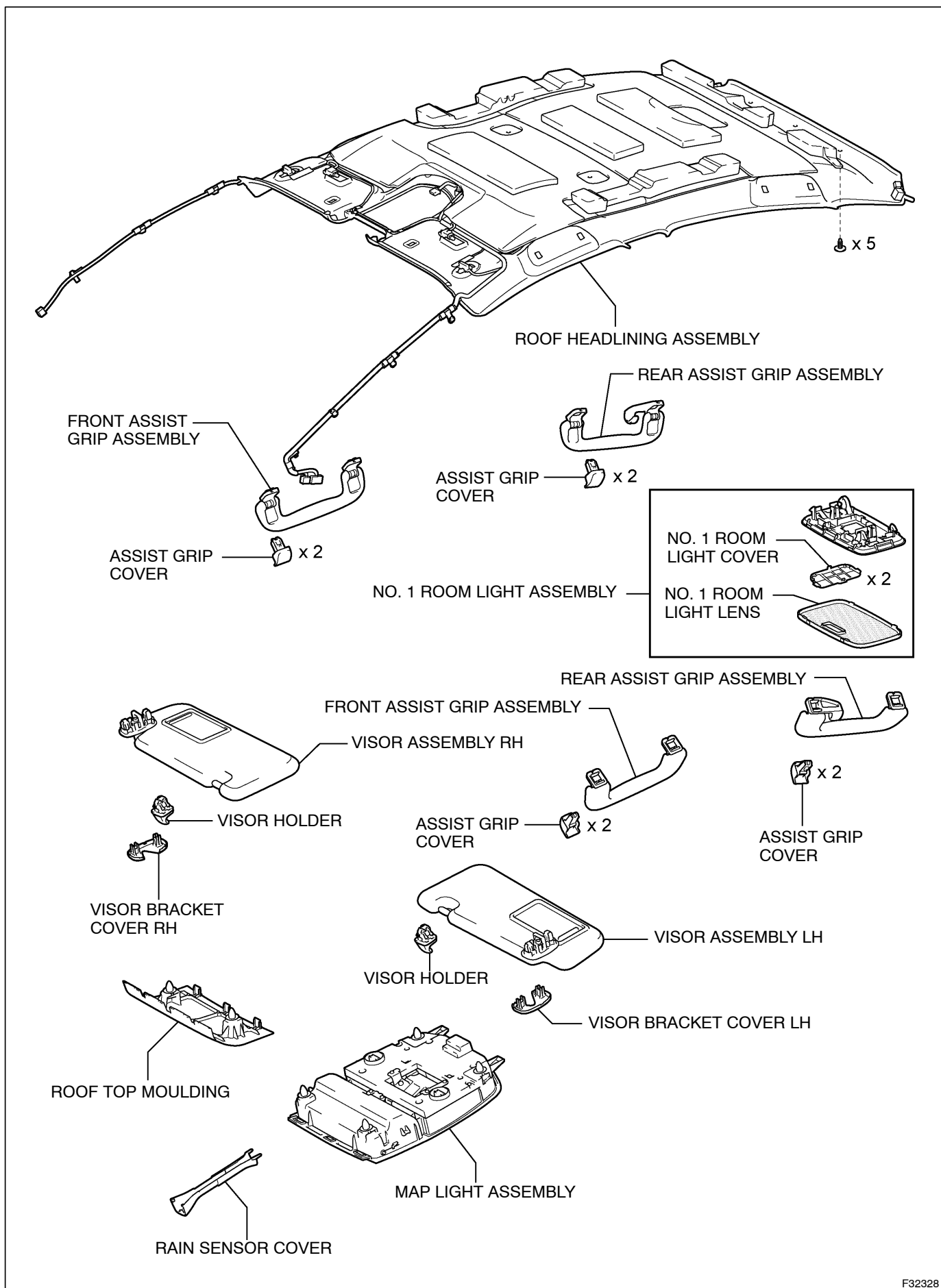
The bolts and nuts must be tightened to the torque specification, as they are related to vehicle safety during a collision.

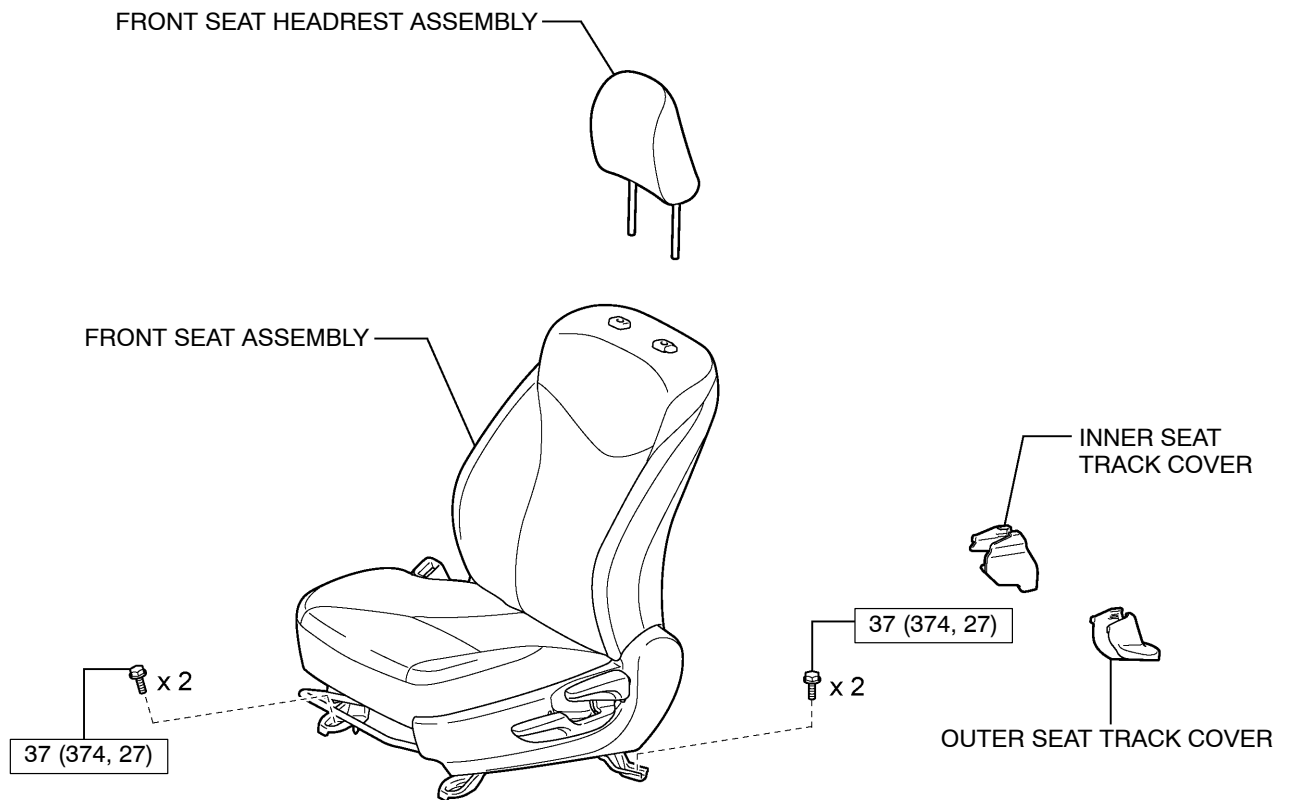
N·m (kgf·cm, ft. lbf) : Specified torque

**CAUTION:**

The bolts must be tightened to the torque specification, as they are related to vehicle safety during a collision.

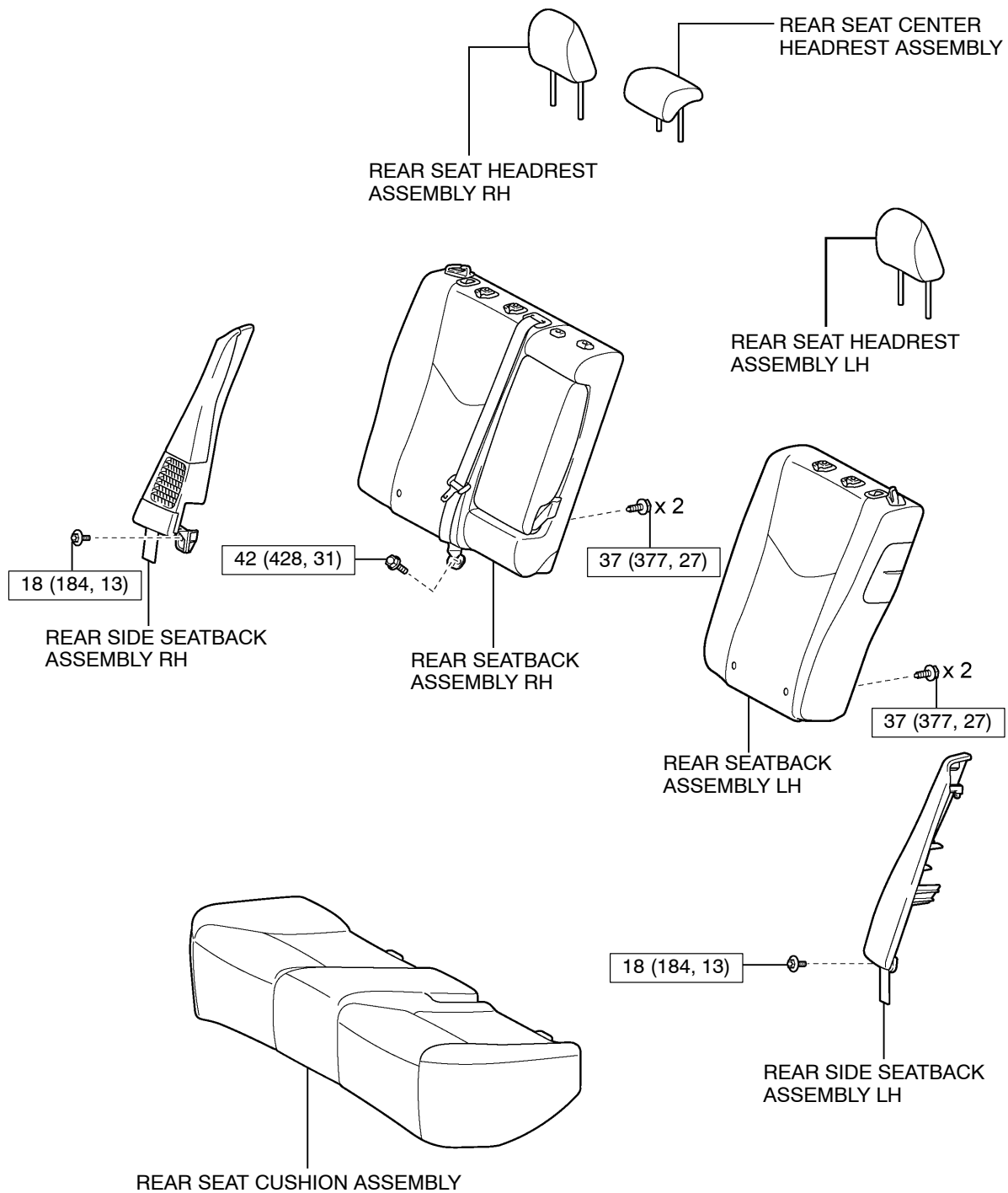
N·m (kgf·cm, ft·lbf) : Specified torque



(e) FRONT SEAT**CAUTION:**

The bolts must be tightened to the torque specification, as they are related to vehicle safety during a collision.

N·m (kgf·cm, ft·lbf) : Specified torque

(f) REAR SEAT**CAUTION:**

The bolts must be tightened to the torque specification, as they are related to vehicle safety during a collision.

N·m (kgf·cm, ft.·lbf) : Specified torque