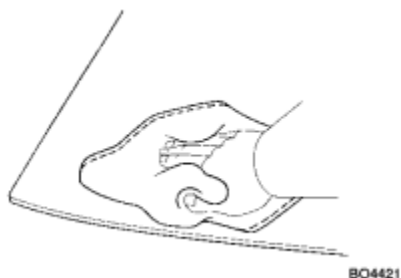


Last Modified: 5-3-2010	6.4 A	From: 200904
Model Year: 2010	Model: Prius	Doc ID: RM00000352K02MX
Title: WINDOW / GLASS: QUARTER WINDOW GLASS: INSTALLATION (2010 Prius)		

INSTALLATION

1. CLEAN QUARTER WINDOW ASSEMBLY



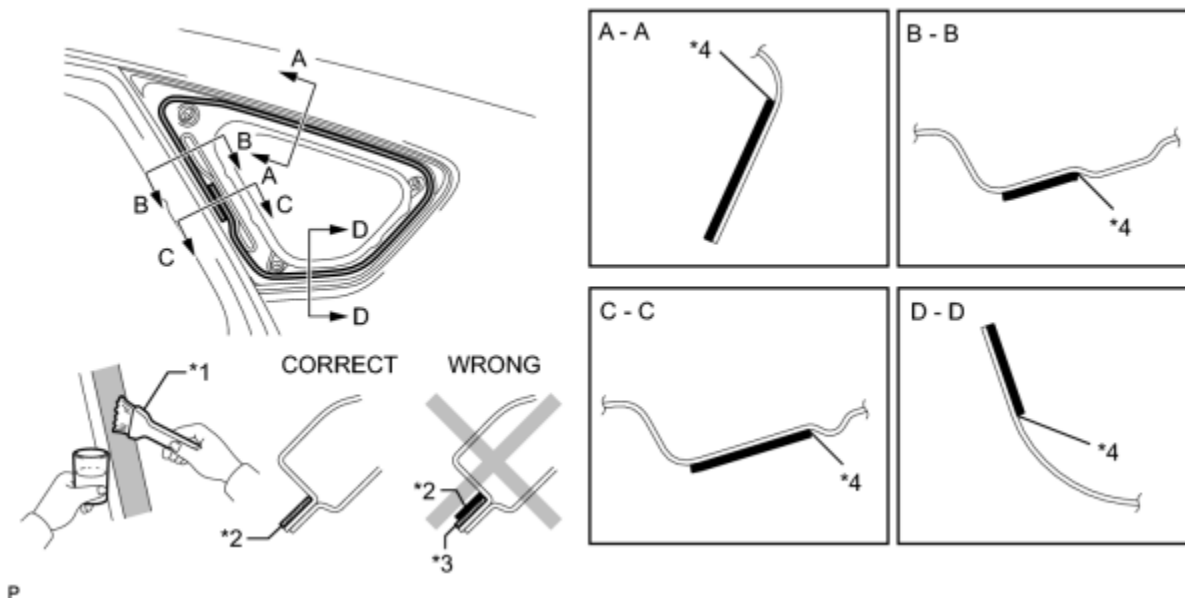
- (a) Clean the outer edges of the quarter window assembly with a non-residue solvent.

NOTICE:

- Do not touch the glass surface after cleaning it.
- Be careful not to damage the glass or clips.

2. INSTALL QUARTER WINDOW ASSEMBLY

- (a) Using a brush or a sponge, apply Primer M to the exposed part of the vehicle body.



Text in Illustration

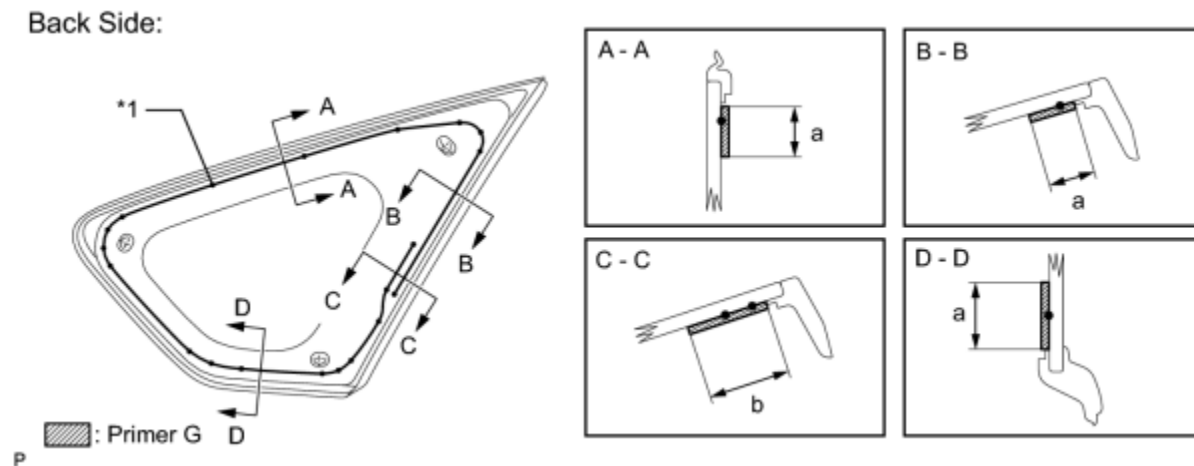
*1	Brush	*2	Primer M
----	-------	----	----------

*3	Adhesive	*4	Edge of Curved Surface
----	----------	----	------------------------

NOTICE:

- Do not coat the adhesive with Primer M.
- Do not apply too much primer.
- Allow the primer to dry for 3 minutes or more.
- Throw away any leftover primer.

(b) Using a brush or a sponge, apply Primer G to the contact surface of the quarter window glass.



Text in Illustration

*1	Ceramic Notch x 20	-	-
ITEM	DIMENSION		
a	11.0 mm (0.433 in.)		
b	19.0 mm (0.748 in.)		

HINT:

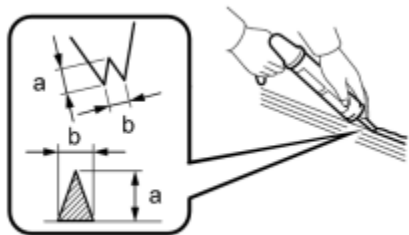
If an area other than that specified is coated by accident, wipe off the primer with a non-residue solvent before it dries.

NOTICE:

- To prevent the glass from breaking at low temperatures, ensure that no primer adheres to the contact surface between the moulding and glass during application.
- Allow the primer to dry for 3 minutes or more.
- Throw away any leftover primer.
- Do not apply too much primer.

(c) Apply adhesive to the quarter window assembly.

Adhesive:
Toyota Genuine Windshield Glass Adhesive or equivalent



P

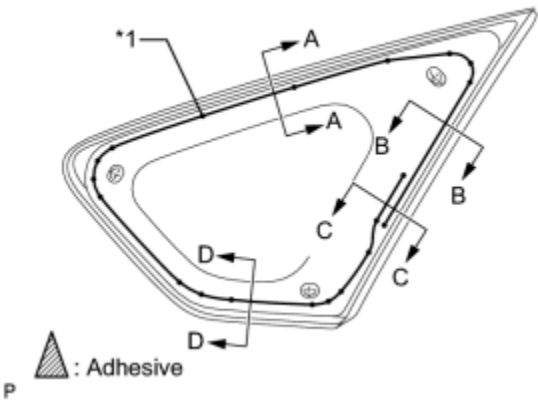
(1) Cut off the tip of the cartridge nozzle as shown in the illustration.

Standard Dimension:

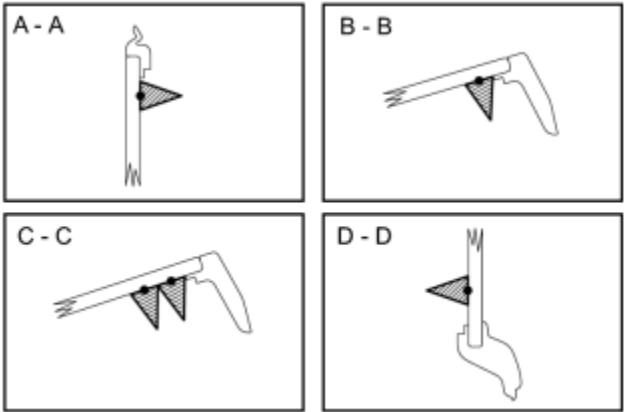
ITEM	DIMENSION
a	12.0 mm (0.472 in.)
b	8.0 mm (0.315 in.)

- (2) Load the sealer gun with cartridge.
- (3) Apply adhesive to the quarter window glass as shown in the illustration.

Back Side:



P



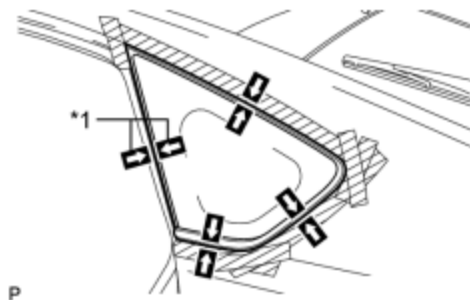
Text in Illustration

*1	Ceramic Notch x 20	-	-
----	--------------------	---	---

(d) Install the quarter window glass to the vehicle body.

- (1) Position the quarter window glass so that the matchmarks are aligned, and press it in gently along the rim (when a window with missing clips is used).

Text in Illustration	
*1	Matchmark



- (2) Lightly press the front surface of the windshield glass to ensure that the windshield glass is securely fit to the vehicle body (when a window with missing clips is used).

HINT:

Press the glass with a force of 98 N (10 kgf, 22 lbf) or more.



- (3) Engage the 3 clips to install the quarter window glass (when a window without missing clips is used).

- (4) Hold the quarter window assembly in place securely with protective tape or equivalent until the adhesive hardens.

NOTICE:

- Allow the primer to dry for 3 minutes or more.
- Check that the clips are attached to the body correctly.
- Check the clearance between the body and glass.

- (5) Lightly press the outer surface of the glass to ensure that the glass is securely fit to the vehicle body.

- (6) Using a scraper, remove any excess or protruding adhesive.

HINT:

Apply adhesive onto the glass rim.



NOTICE:

Do not drive the vehicle within the time described in the table below.

Minimum Time:

TEMPERATURE	MINIMUM TIME PRIOR TO DRIVING VEHICLE
35°C (95°F)	1 hour and 30 minutes

20°C (68°F)	5 hours
5°C (41°F)	24 hours

3. INSPECT FOR LEAK AND REPAIR

- (a) After the adhesive has hardened, apply water from the outside of the vehicle. Check that no water leaks into the cabin.
- (b) If water leaks into the cabin, allow the water to dry and add adhesive.
- (c) Remove the protective tape.

4. INSTALL ROOF SIDE INNER GARNISH ASSEMBLY

INFO

5. INSTALL DECK TRIM SIDE PANEL ASSEMBLY LH (for LH Side)

INFO

6. INSTALL DECK TRIM SIDE PANEL ASSEMBLY RH (for RH Side)

INFO

7. INSTALL TONNEAU COVER HOLDER CAP

INFO

8. INSTALL LUGGAGE HOLD BELT STRIKER ASSEMBLY

INFO

9. INSTALL REAR DECK TRIM COVER

INFO

10. INSTALL DECK TRIM SERVICE HOLE COVER

INFO

11. INSTALL REAR NO. 1 FLOOR BOARD

INFO

12. INSTALL REAR NO. 2 FLOOR BOARD SUB-ASSEMBLY

INFO

13. INSTALL REAR NO. 1 FLOOR BOARD SUB-ASSEMBLY

INFO

14. INSTALL DECK FLOOR BOX LH (for LH Side)

INFO

15. INSTALL REAR NO. 4 FLOOR BOARD (for LH Side)

INFO

16. INSTALL TONNEAU COVER ASSEMBLY (w/ Tonneau Cover)

INFO

17. INSTALL REAR SIDE SEATBACK ASSEMBLY LH (for LH Side)

INFO

18. INSTALL REAR SIDE SEATBACK ASSEMBLY RH (for RH Side)

INFO

19. INSTALL REAR SEAT CUSHION ASSEMBLY

INFO

20. CONNECT REAR DOOR OPENING TRIM WEATHERSTRIP

INFO

21. INSTALL REAR DOOR SCUFF PLATE

INFO

22. INSTALL REAR NO. 3 FLOOR BOARD (for RH Side)

INFO

23. INSTALL REAR DECK FLOOR BOX

INFO

24. INSTALL REAR NO. 2 FLOOR BOARD (for Separate Type)

INFO

